

## How to use the Adams Rite Fax Back Order Form:

1. Print the complete set of forms.
2. Fill them out using the proper codes and dimensions.
3. Fax it back to us at the toll free number listed at the top (1-800-232-7329)

We will contact you when we have received your order.

If you would rather fill out this form on-line  
please go back to the Adams Rite Electronic Form.



<p>A. Company: _____</p> <p>By: _____</p> <p>Ph # _____ PO # _____</p> <p>Fax # _____ Ship Date Req. _____</p>	<p>B. Ship To: _____</p> <p>_____</p> <p>_____</p> <p>Project _____</p>	<p>C. All orders must include the following:</p> <ol style="list-style-type: none"> <li>1. Signed Purchase Order.</li> <li>2. This form filled out completely.</li> <li>3. Copy of hardware schedule and templates.</li> </ol>
----------------------------------------------------------------------------------------------------------------	-------------------------------------------------------------------------	--------------------------------------------------------------------------------------------------------------------------------------------------------------------------------------------------------------------------------

**General notes and instructions:**

**Columns 5 & 6** - Width and Height are **frame opening** dimensions.

**Column 7** - Steel type: Cold Rolled (CR) or A60 Galvanized (G).

**Column 8** - Finish Choices: Prime aint (P) / Finish Paint (FP) / Plastic Laminate (HPL) faces only (edges painted black). Specify 1 or 2 sides

**Column 9** - Skins: 18 ga. or 16 ga.

**Column 10** - Core: Honeycomb (H) (18 ga. only), Steel Stiffened (S), Temp. rise (T).

**Column 13** - Undercut (Std is 5/8"): Clearance between sub-floor & bottom of door. Consider floor finishes & threshold height when determining undercuts.

**Column 14** - Hardware set number. Attach list of hardware for opening.

**For Hinge, Vision Lite, hardware location information see page 2.**

1. Tag #	2. Door Model	3. Pair/Dbl.- Egress/ Single/ Unequal	4. Hand	5. Frame Width	6. Frame Height	7. Steel CR/G/ S1/S2	8. Finish P,FP, HPL	9. 18 ga. or 16 ga.	10. H, S or T	11. Fire Rating	12. Door Elev.	13. Under Cut	14. Hdw#	15. Exit Device Finish	16. Lever Design	17. Lever Function: Cyl./NoCyl.	18. Lever finish	19. Notes (Electric Options etc.)



D. Butt Hinge Locations

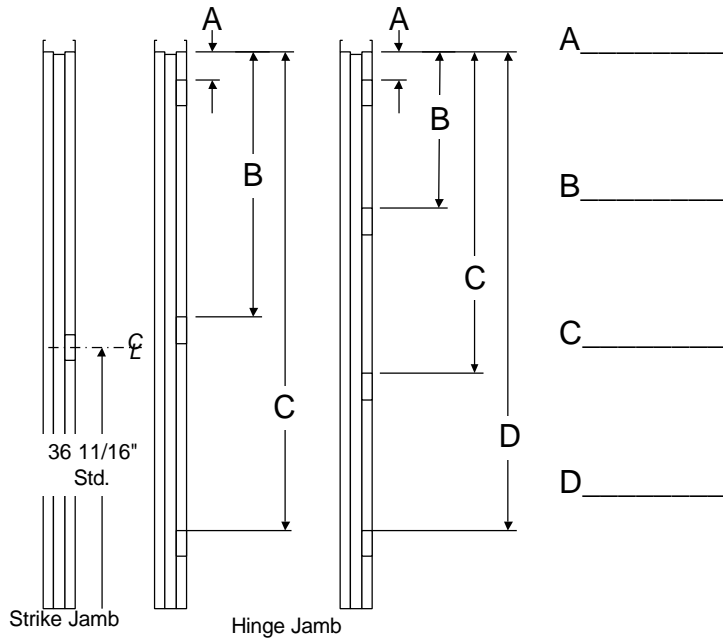
**Provide Frame Dimensions**

Hinge Model \_\_\_\_\_

Hinge Size: \_\_\_\_\_

Hinge Weight: \_\_\_\_\_

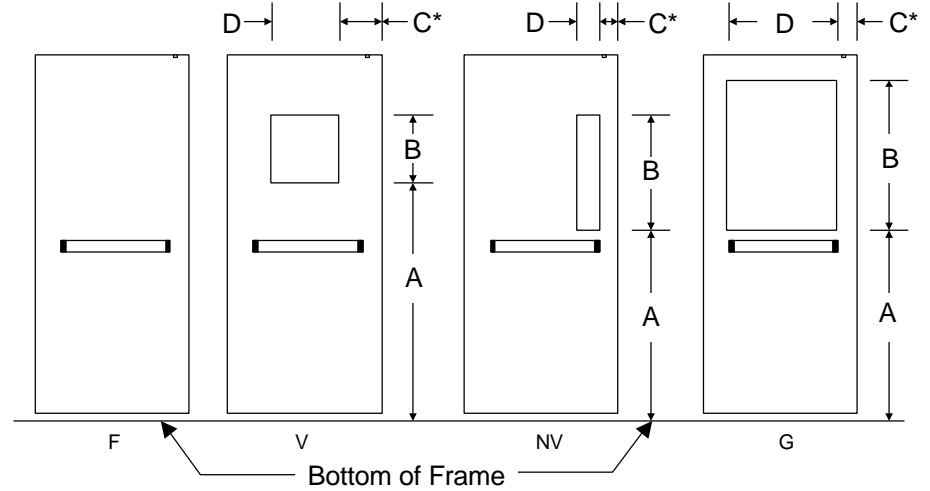
Frame Hinge Backset: (11/32" Std.) \_\_\_\_\_



**CONTINUOUS HINGE**

- Adams Rite       By others (Mfg./Model) \_\_\_\_\_
- Pocket Pivots (Mfg./Model) \_\_\_\_\_ Specify Pivot C/L \_\_\_\_\_

E. Door Elevations (Column 12)



Specify **Visible Glass** (see *RITE Door* Vision Lite detail box "F".)

A: \_\_\_\_\_ B: \_\_\_\_\_

C: \_\_\_\_\_ D: \_\_\_\_\_

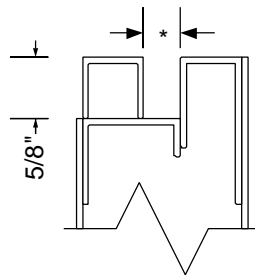
**\* 6" minimum stile required**

- Lite Kit by others (Anemostat LoPro™ kit, or equal, required for HPL doors)  
Specify Manufacturer and Model \_\_\_\_\_

Per ICC/ANSI A117.1-1998 bottom of visible glass shall be 43" max. above floor

F. *RITE Door* - Vision Lite Detail (Column 12)

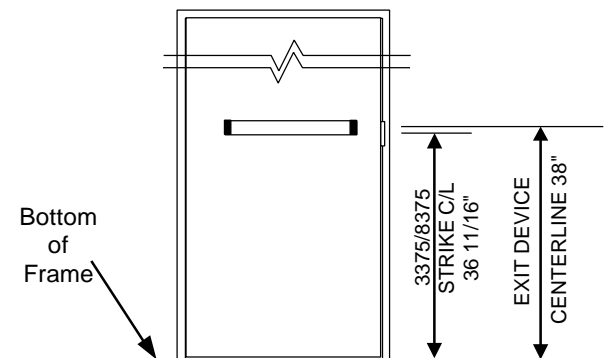
**Glass Size = Visible Glass + 5/8"**

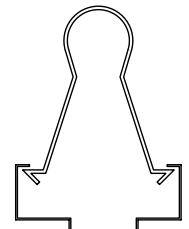
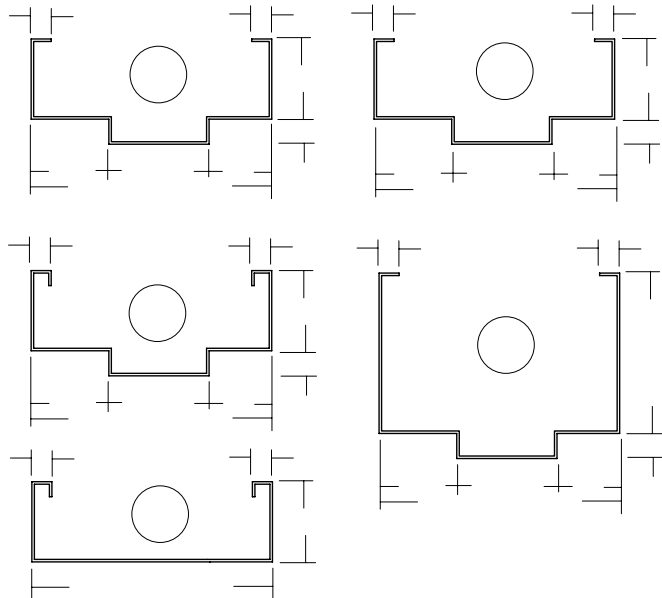
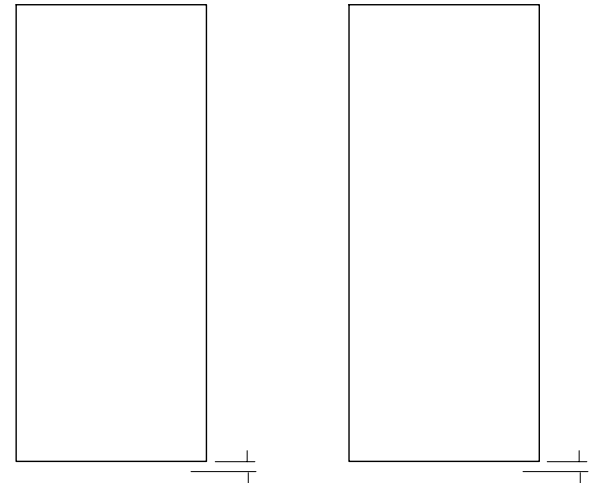
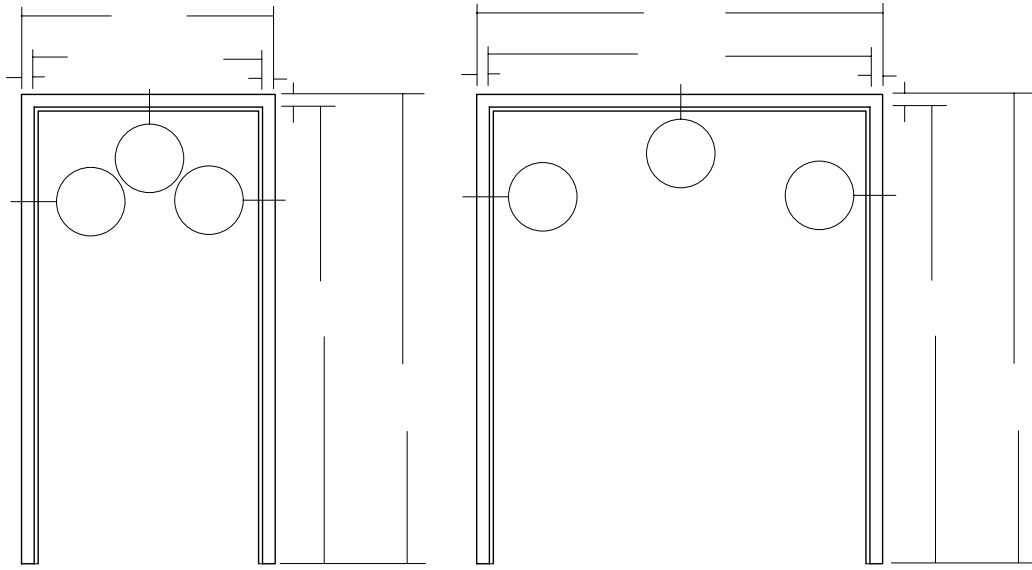


\*Specify Glass Thickness \_\_\_\_\_

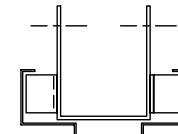
G. Exit Device/Strike Heights:

If other than standard specify strike C/L: \_\_\_\_\_



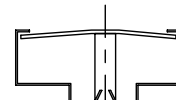
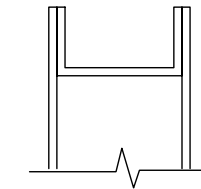


MW  
Masonry Anchor

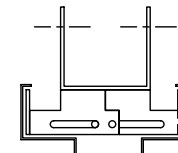


WS  
Wood Stud Anchor

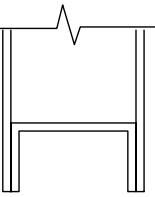
Top  
Channel



EWA  
Existing Wall Anchor



M.P.  
Multipurpose  
Anchor



Bottom  
Channel

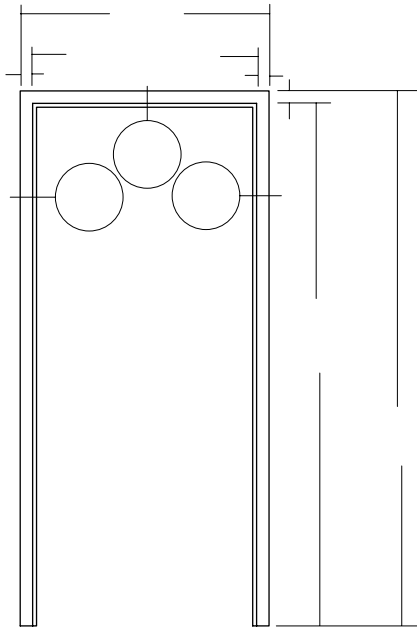
JOB NO.

PROJECT

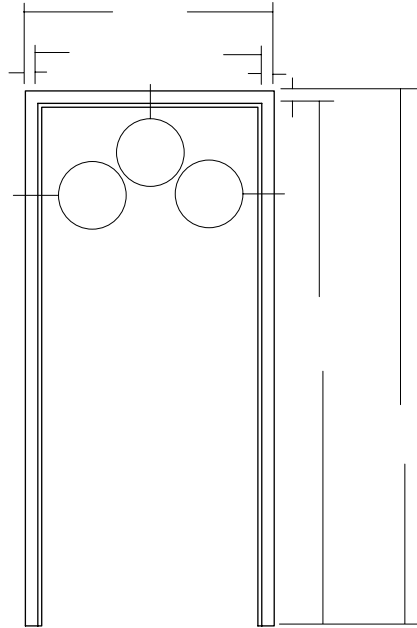
LOCATION

SHEET NO.

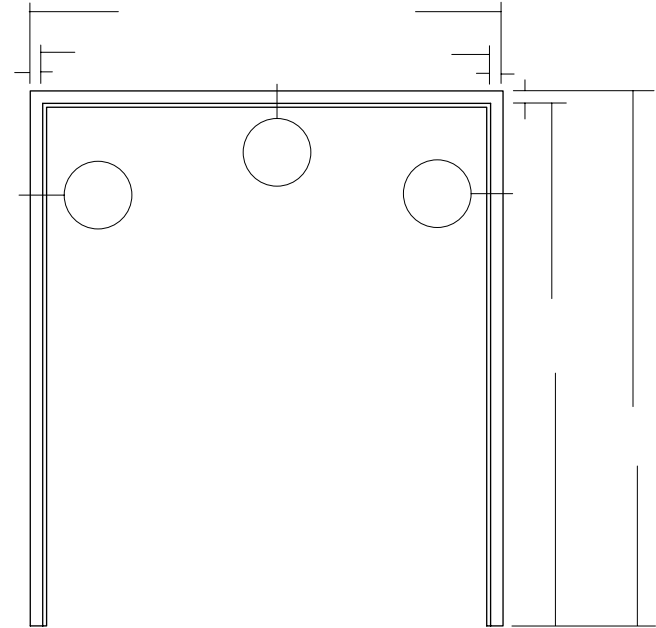
OF



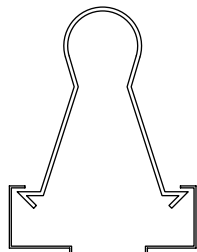
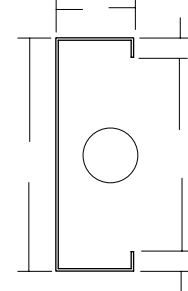
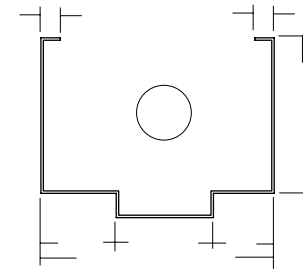
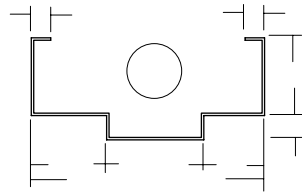
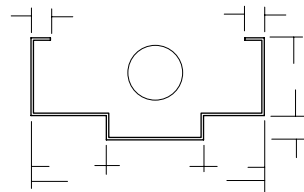
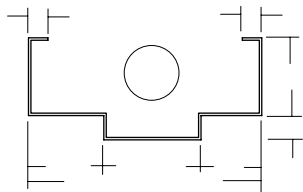
Elev. No. \_\_\_\_



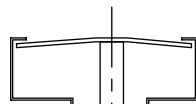
Elev. No. \_\_\_\_



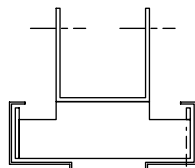
Elev. No. \_\_\_\_



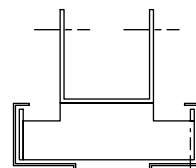
MW



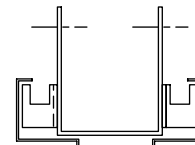
EWA



MP



MP



WS



SC

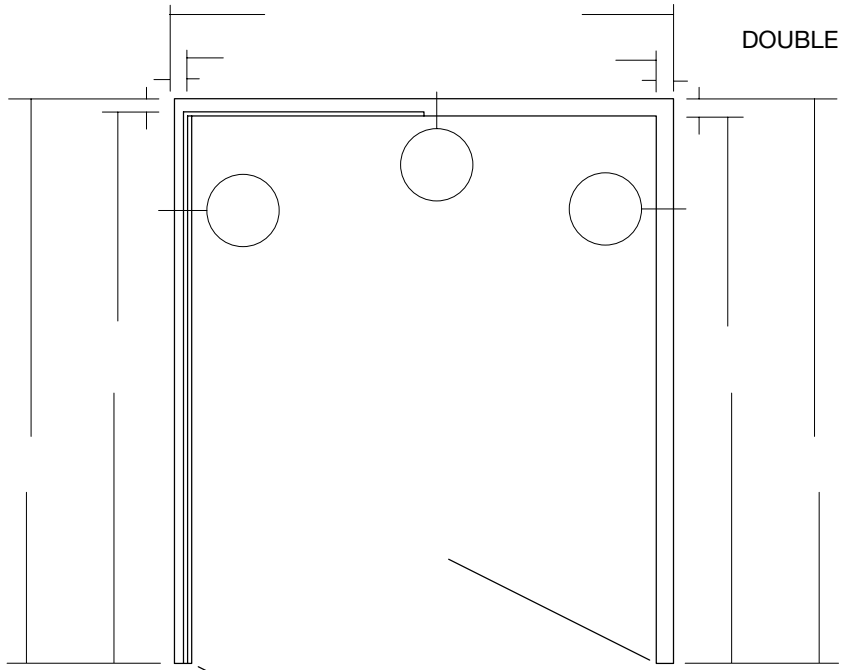
JOB NO.

PROJECT

LOCATION

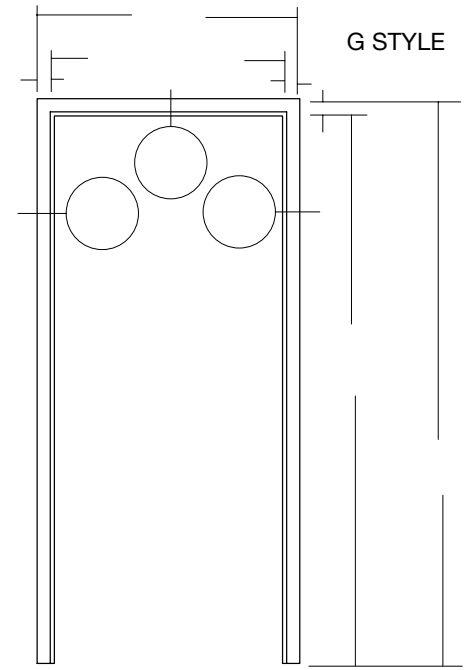
SHEET NO.

OF



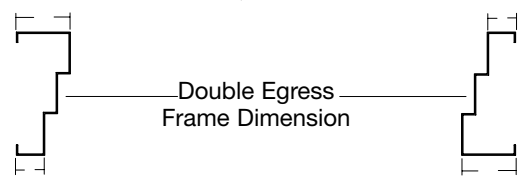
DOUBLE EGRESS

Elev. No. \_\_\_

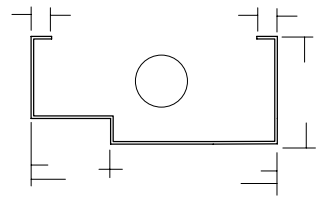
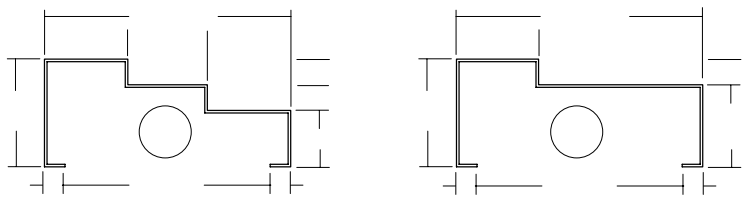
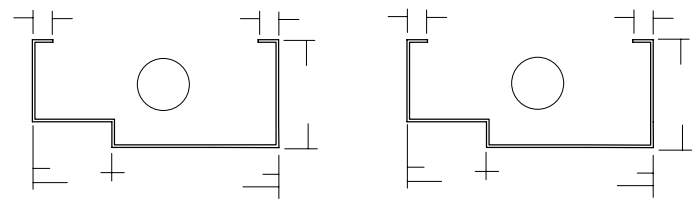


G STYLE

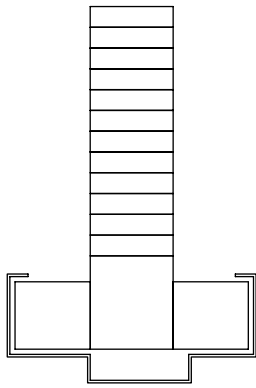
Elev. No. \_\_\_



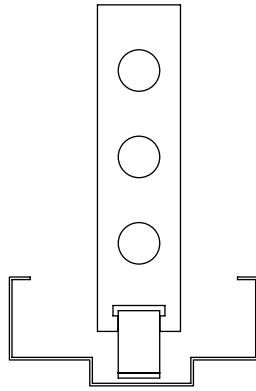
Double Egress  
Frame Dimension



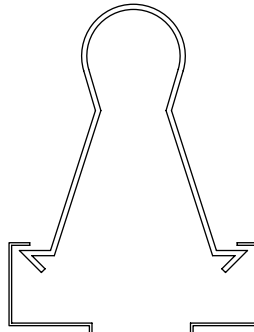
JOB NO.	PROJECT	LOCATION	SHEET NO. OF
---------	---------	----------	--------------



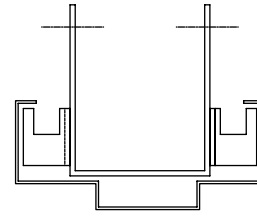
M  
Corrugated Masonry



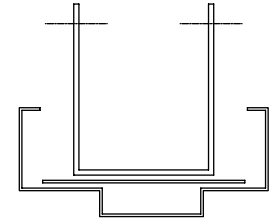
ML  
Welded Masonry



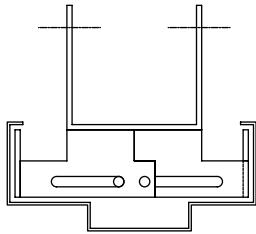
MW  
Masonry Wire



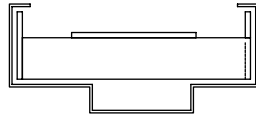
WS  
Wood Stud



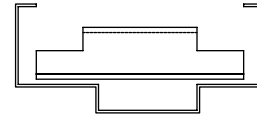
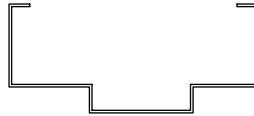
WWS  
Welded Wood Stud



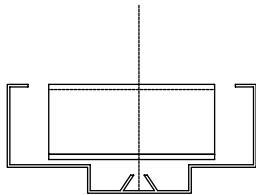
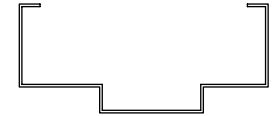
AMP  
ADI. Multipurpose



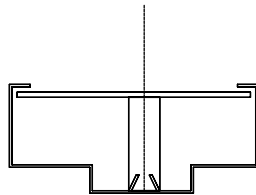
SC  
Channel Stud



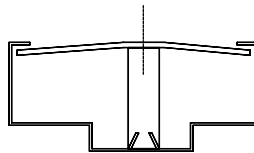
WSC  
Welded Channel Stud



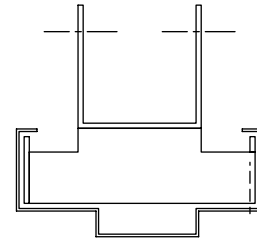
WSB  
Welded Spacing Bracket



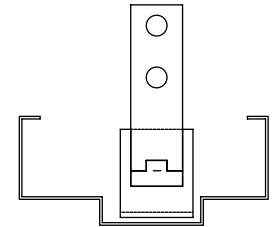
PS  
Pipe Space



EWA  
Existing Wall Anchor



MP  
Multipurpose



CS  
Ceiling Strut

JOB NO.	PROJECT	LOCATION	SHEET NO. OF
---------	---------	----------	--------------

# CURRISTAIN DOORS

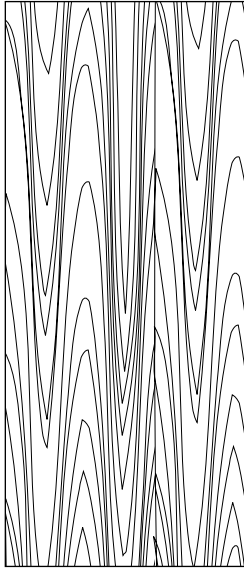
18 Gauge

16 Gauge  
(Not Available for E6)

707 Series

Polystyrene Core

727 Series  
(Not Available for E6)



required for

## **SPECIFICATIONS**

Stainable wood grained steel doors shall be as manufactured by CURRIES, Mason City, Iowa. Doors shall be 707 Series construction with continuous hinge and lock channel construction the full height of the door. Hinge and lock mounting preparations are integrally formed into these channels. Inverted top and bottom channel construction provides a full perimeter channel door construction with door face skins supported by a polystyrene core permanently bonded to the face skins as required for insulating values on all openings. Doors shall be manufactured of 18, or 16 gauge galvanized steel for corrosion resistance. Door face skins are grained .005" deep to accent the color stain application requested by the building owner. Doors are available handed as single doors or pairs of doors with or without fire resistance ratings. Doors are factory stained and sealed with the owner's choice of CURRIES standard colors.

NOTE: The 727 Series temperature rise door specification may also be used here.

## **COLOR CHOICE**

Natural

Cashew

Cabernet

Wheat

Cocoa

Java

JOB NO.

PROJECT

LOCATION

SHEET NO.

OF